



# West Dean Church of England Primary School

West Dean, Chichester, West Sussex, PO18 0RJ

Telephone: 01243 811247



*We do our best in all we do, with God's love.*

*'Love one another. As I have loved you, so must you love one another.'* John 13

**Newsletter 37 05.07.24 Our overall attendance rate is 95.4% this week.**

**Don't forget Rev Sarah's 'Rectors Ramble' which can be found at: <http://thevalleyparish.org/from-the-vicar>**

Dear Parents and Carers, As I write this, the rain is pouring down at what would have been about the mid-point of our Sports Sizzler event. I am so sorry that the British summer time has not cooperated with us again. A few days ago in the midst of the hot sunshine, who would have thought the weather could turn so dreadful, just in time to ruin our plans for a second time. Hard work goes into planning and preparing these events and it is not only disappointing for the children when plans have to be postponed or cancelled, but frustrating too for those that work so hard to make these lovely things happen in our school. We hope to be able to run both events in the days remaining of term, although not necessarily together on the same day, and the diary is already looking fairly full. Watch this space for a new date and let's keep our fingers crossed for the return of warm, dry weather.

**Ofsted Inspection** — It's been quite a week! Thank you for your support and encouragement during our two-day Ofsted Inspection this week. We anticipated that this would come at some point this term, but with just 24 hours notice given for inspections, there is always a slight element of surprise and a need to adapt some arrangements for the week when that call comes. Thank you for your kind words of support throughout what was rightfully a rigorous and challenging process. Inspections can vary in type and length. Ours was a Section 5, two-day graded inspection. On the first day the inspection team was comprised of a lead inspector and a team inspector, with just the lead in attendance on the second day. Inspectors look at documentation, speak with all stakeholders, including frequent discussion with children, they visit classrooms and observe all aspects of school life. The inspector makes individual judgements about the following five areas: Behaviour & attitudes, Personal development, Quality of Education, Leadership & management and Early Years. In addition, safeguarding is reviewed and a judgement made over its effectiveness. From these individual judgements, an overall effectiveness judgement for the school is determined. Further information on how schools are inspected can be found at:

<https://www.gov.uk/guidance/inspecting-schools-guide-for-maintained-and-academy-schools> There are clear rules on the point at which we can share the outcome of our inspection with you, and unfortunately, due to our inspection coming late in the term, the report will almost certainly not be published until September. What I can say is that I am immensely proud of the conduct of your children throughout the process, and of the endless dedication, care and effort of our superb staff team. It's time for a rest—have a good weekend! Chris Williams

### Lordington Lavender Visit

Apple and Maple Classes were lucky enough to be invited to visit Lordington Lavender this week. The farm has secured an education access grant that subsidises farm visits for schoolchildren, meaning our visit was free of charge (excluding transport costs). The children were learning about where some of our food comes from, why bees are so important and tried on a bee suit and ate some honey. They had the chance to pick and smell some lavender and even had a tractor ride. The weather was kind for them and they all really enjoyed their visit. Thank you to Victoria Elms at Lordington Lavender for arranging this for us.

<https://lordingtonlavender.co.uk>



## The Selsey Arms

West Dean

Book your table now  
**Tuesday 9th July**  
7.30pm



# Bingo

## Cash prizes

### Chestnut Tree House Owl Project

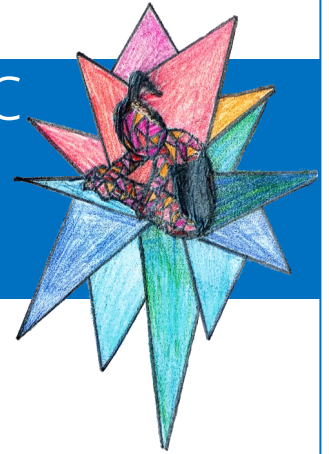
**Don't forget, the purpose of our recent 'Little Hoot' Owl project is to raise funds to support the incredibly valuable work of Chestnut Tree House children's Hospice. You can make a donation on our JustGiving page at:**

[https://www.justgiving.com/page/westdean-1710949606324?utm\\_medium=fundraising&utm\\_content=page%2Fwestdean-1710949606324&utm\\_source=copyLink&utm\\_campaign=pfp-share](https://www.justgiving.com/page/westdean-1710949606324?utm_medium=fundraising&utm_content=page%2Fwestdean-1710949606324&utm_source=copyLink&utm_campaign=pfp-share)



The Big Hoot, Little Hoot is in Arundel and Chichester. Keep a look out, we know that our Owlet is already on display somewhere in the centre of Chichester. Who will be the first to find it?

# West Dean CE Primary School Olympic & Paralympic Showcase



Join us for a celebration of this term's learning about the Olympic & Paralympic Games on **Monday 8th July** in a marquee on the lawn of West Dean College.

A colourful range of the children's work will be on display in the marquee and there will be short performances of song, dance and drama on the stage. The showcase gallery will be open for visitors between **5pm and 8pm**, with stage performances spread throughout the evening, starting with the youngest children.

Full details of the event were sent to parents last week.

## Ticks

A parent has informed us that they found a tick on their child this week. Unfortunately, although we always look out for ticks on the children, this is an unavoidable part of being in our rural setting in the summer. Here is some advice from the South Downs National Park Authority:

Ticks are tiny spider-like creatures found in moist areas of dense vegetation or long grass in woodland, grassland, moorland, heathland and some urban parks and gardens.

They can be found throughout the year, but are most active between spring and autumn. They feed on the blood of birds and mammals, including humans.

Some ticks carry the bacteria responsible for Lyme disease, an infection that can spread to humans if bitten by infected ticks.

It is possible to reduce the risk of tick bites by following some simple advice:

- When possible, stick to footpaths and avoid long grass when walking or cycling
- Wear long sleeved shirts and trousers tucked into your socks when near tick-infested areas
- Wearing light-coloured fabrics that may help you spot a tick on your clothes
- Use insect repellent on any exposed skin
- Check your skin and clothes for ticks at the end of the day, removing any you find as soon as possible
- Regularly check your pets for ticks
- If Lyme disease is left untreated, you could develop severe symptoms. Lyme disease is treatable if caught early, so it's important to know the symptoms and look out for them.

Read full [NHS advice on ticks and Lyme disease](#).

## Foodbank Friday

Just a reminder that next Friday, 12th July, is our last Foodbank Friday for this academic year.



Please do bring in a donation to help and support if you are able to.

Here is the link to their website to check out urgently required items.

<https://chichesterdistrict.foodbank.org.uk/give-help/donate-food/>

Thank you for your support, your help is always greatly appreciated.

Our final Rambling Club finished with a breezy picnic at the top of the Trundle yesterday. We were lucky with the weather and the views were spectacular. Well done Ramblers!





- Yr R** *Finley* - for your super swimming and confidence in the water. Well done!
- Yr 1** *Jack* - for your enthusiasm and hard work in getting ready for our showcase. Well done.
- Yr 2** *Elsie* - for always giving 100% to everything you do with a brilliantly positive attitude. You are a superstar!
- Yr 3** *Nella* - for being a thoughtful and considerate friend to many in Beech Class.
- Yr 4** *Khloe* - for the stunning Olympic bookmark you have sewn! You have shown such attention to detail.
- Yr 5** *Ollie* - for your sense of humour and perseverance when baking!
- Yr 6** *George* - for your kindness, patience, skill and supportive attitude during our 'bake-off extravaganza'!





# Diary Dates 2024



## 2023/24 & 2024/25 INSET Days

Monday 22nd & Tuesday 23rd July 2024

Monday 2nd September 2024

Monday 6th January 2025

Monday 21st and Tuesday 22nd July 2025

The final INSET day is still TBC, pending training availability.

## Summer Term 2024 - Monday 15th April - Friday 19th July 2024

Monday 8th July	Paris Olympics Showcase Exhibition
Tuesday 9th July	Hugo Van Driel Assembly
Wednesday 10th July	Louis Saunders—Boccia Paralympian visit to school
Thursday 11th July	Goodwood Festival of Speed—school open from 8am.
Friday 12th July	Goodwood Festival of Speed—school open from 8am.
Friday 12th July	Foodbank Friday
Tuesday 16th July	2.00, Leavers' Service in school
Wednesday 17th July	End of Term Disco (details to follow)
Thursday 18th July	2.30, Pre-School Leavers' Festival
Monday 22nd July	9.00—4.00, AAA Coaching (School closed, Inset)
Tuesday 23rd July	9.00—4.00, AAA Coaching (School closed, Inset)
Monday 2nd September	INSET
Tuesday 3rd September	First Day back at school for the Autumn Term with new start time of 8.30.
Monday 9th September	First Day for our new Reception children (staggered start times tbc)

### Staffing for 2024 / 25

On Wednesday afternoon this week, the children all enjoyed some time with the other children and staff adults who will be in their class from next September. We always run this activity on the day that most of the Year 6 children go to their new secondary schools for a transition event. Consequently, I am sure that your children will have already shared the details of which adults will be with them from September.

There is very little change to this year, as follows:

**Apple Class**—Mrs Chilton & Mrs Plackett, supported by Ms Boxall and Mrs Muggeridge.

**Maple Class**—Mrs Reynolds, supported by Mrs Pearmaine

**Beech Class**—Mrs Pierron & Mrs Anstee, supported by Miss Scott

**Chestnut Class**—Mrs Johnson & Mrs Huxham, supported by Mrs Goacher.

Sadly, we say farewell to Miss Evans at the end of this term, who is relocating to her hometown to be nearer family. We thank Miss Evans for all she has brought to West Dean and wish her all the very best in her next adventures.

